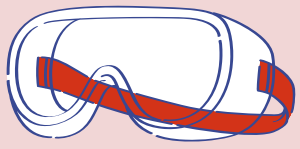


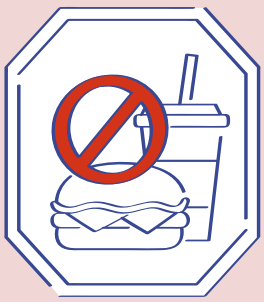
LABORATORY SAFETY GUIDELINES



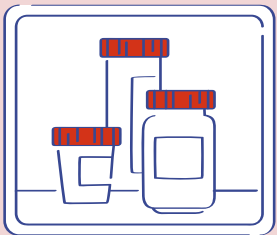
Wear safety goggles, lab aprons or coats, and protective gloves.



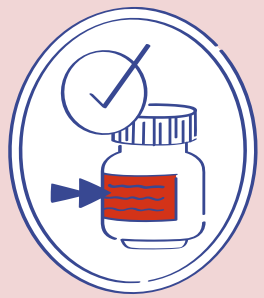
Handle chemicals, glassware, and equipment with care.



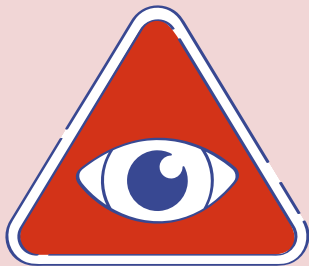
Do not eat or drink inside the laboratory.



Do not leave your experiments unattended.



Read and check the labels before using any chemical.



Monitor your experiment thoroughly.



Ensure cleanliness inside the laboratory.



Dispose waste properly.



Notify the supervisor if you encounter incidents and broken equipment.



Know what to do in case of an emergency.